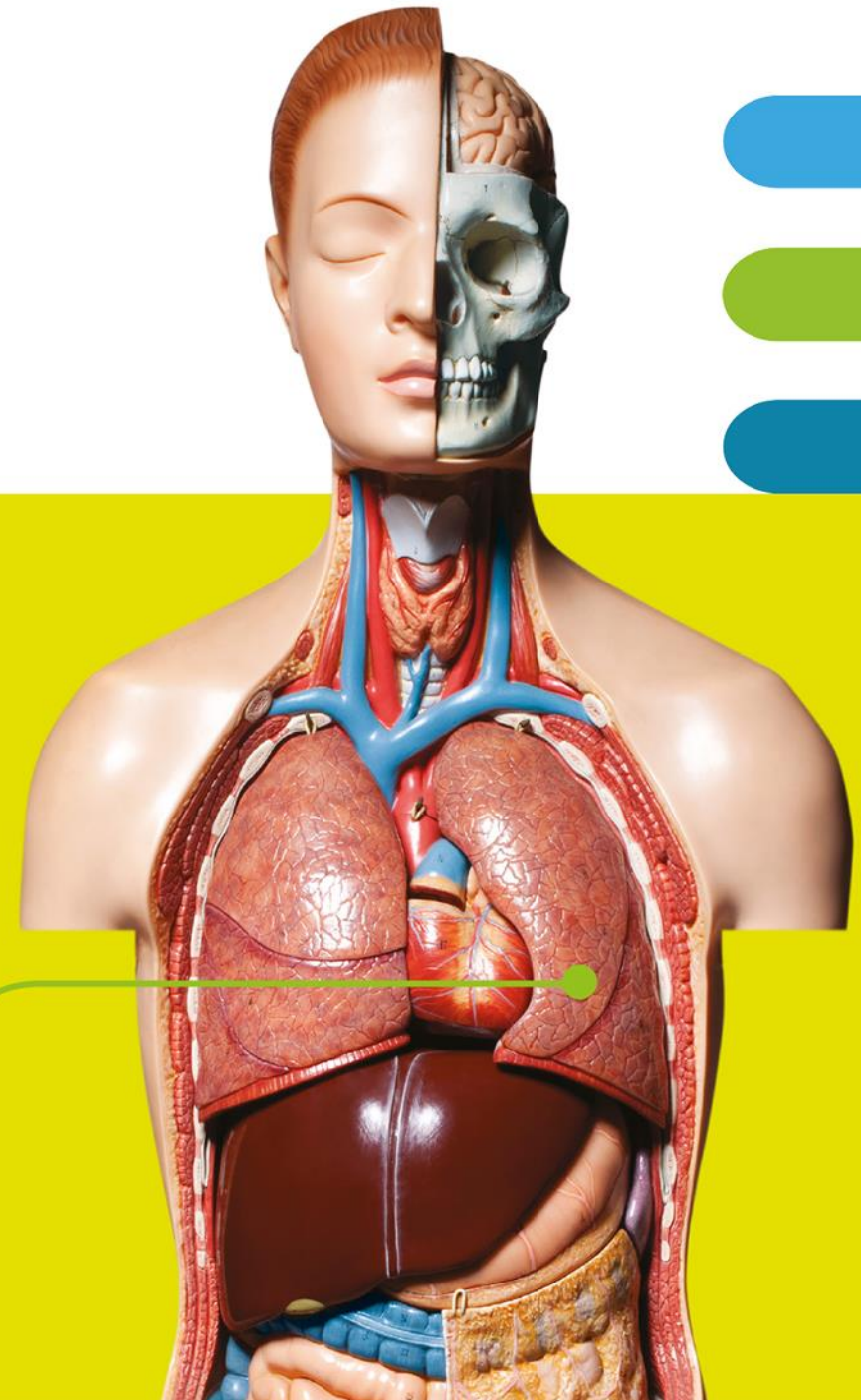


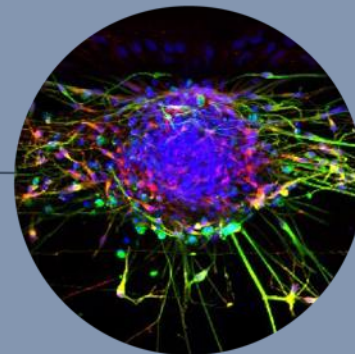
Human Tissue Models for Better Therapies

Wouter Strijker

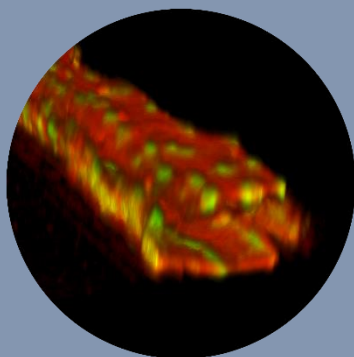


MIMETAS models

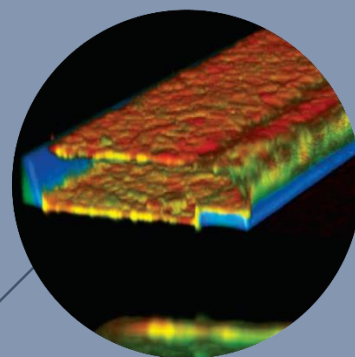
cancer models
pancreatic cancer
glioblastoma
breast cancer



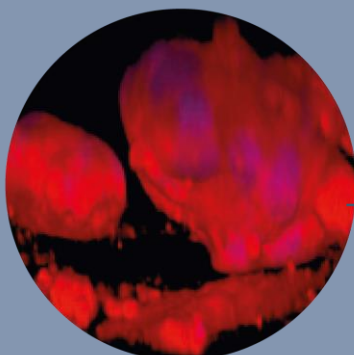
brain



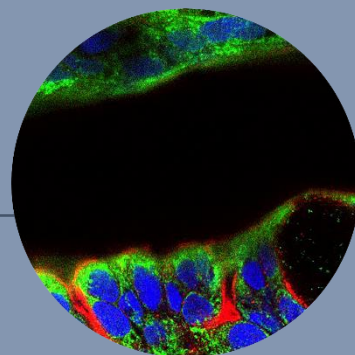
vasculature



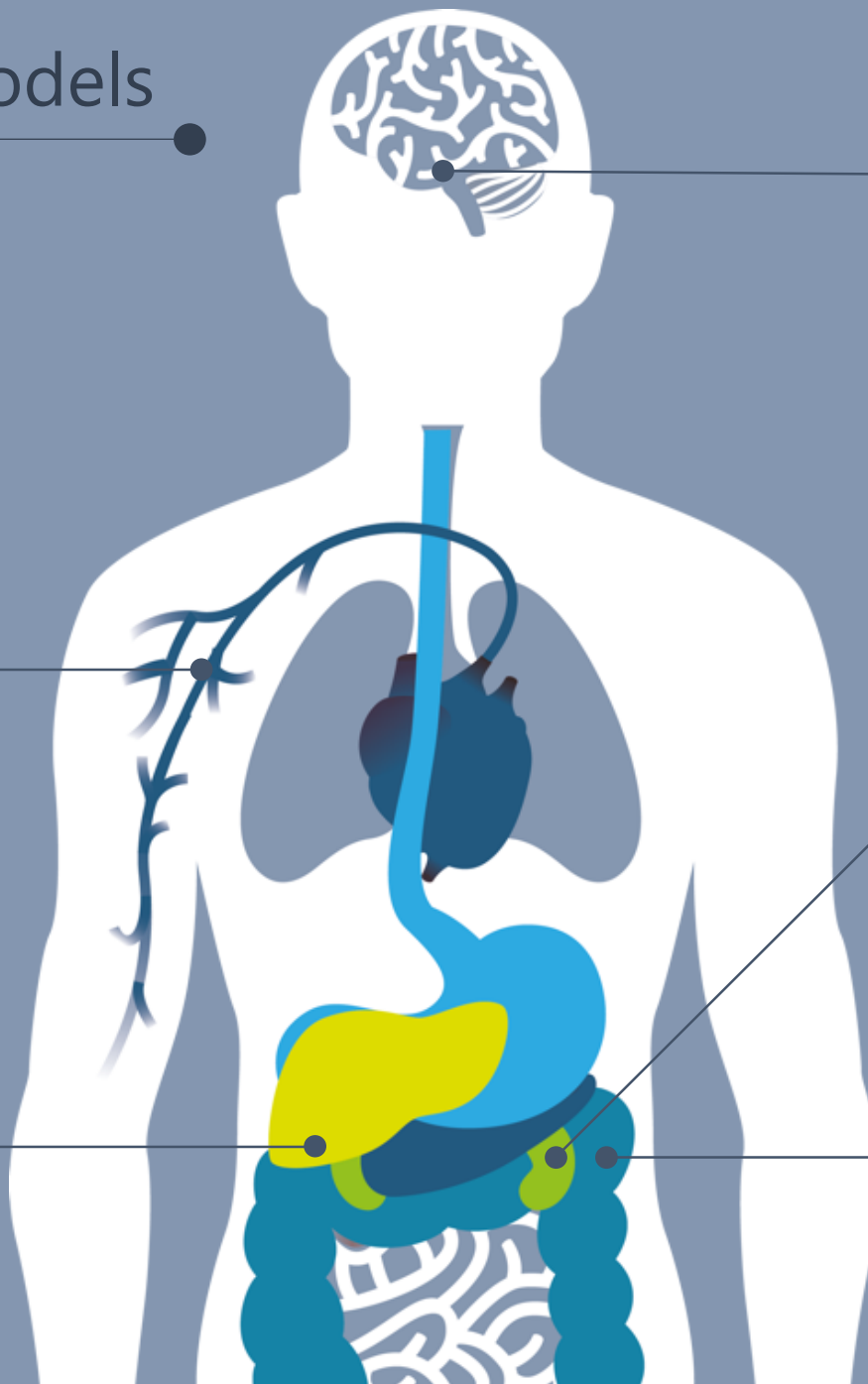
kidney



liver



gut



MIMETAS

the organ-on-a-chip company



Wouter Strijker
w.strijker@mimetas.com
www.mimetas.com

JH Oortweg 19
2333 CH Leiden
The Netherlands